

# ROTO-Q 360°

• USER GUIDE •



*"Always think 360"*

@ROTOQ360.COM



## INTRODUCTION

**ROTO-Q 360: The World's First Non Electric Self-Rotating Rotisserie, Cook Smart Eat Smart!**

**ROTO-Q 360™** is a Non-Electric rotisserie-cooking device, designed to make rotisserie style cooking easier than ever. The **ROTO-Q 360™** attaches to any conventional oven, Gas/Charcoal Grill, Fire Pit, etc. turning your everyday cooking appliances into state of the art rotisserie cookers. Utilizing an external gearbox with crank mechanism, the cook time is set by manually turning the knob a specified number of rotations, to achieve the optimal cooking time for a wide array of food items.

The **ROTO-Q 360™** can cook various types of meat, fish and poultry (*up to 5lbs.*) in 60 mins. or less. Additionally, by utilizing one of the many attachments available for the device, you can further utilize your **ROTO-Q 360™** to cook other food items, such as potatoes, fries, and roasted vegetables (attachments sold separately).

When you're finished cooking, the **ROTO-Q 360™** can be disassembled for easy cleaning and folds up for convenient storage.

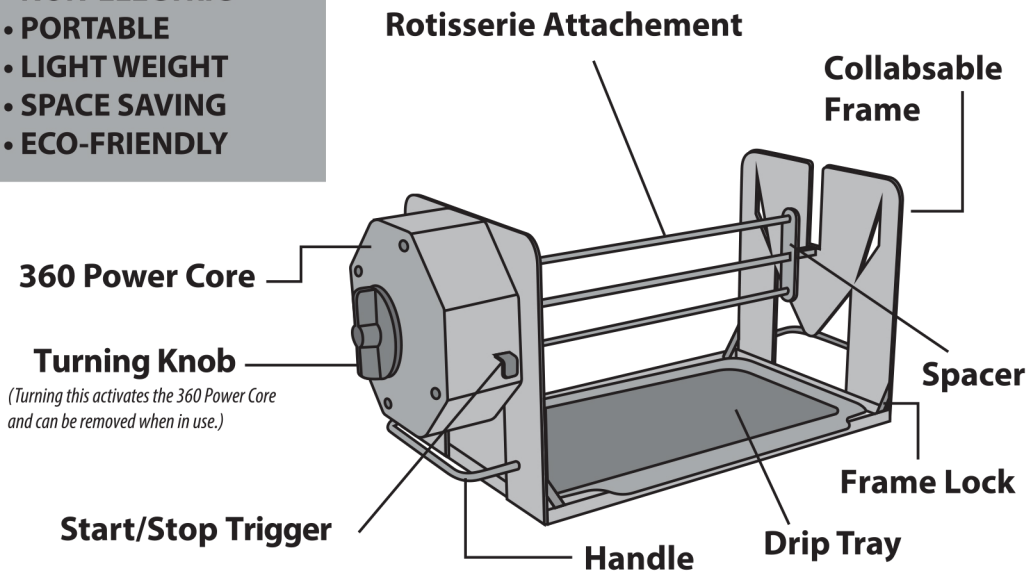
Breathe new life into your cooking appliances and start producing restaurant-quality, rotisserie style fare in your very own home with the **ROTO-Q 360™**

**Important:** Please make sure that your **ROTO-Q 360** has been shipped with the components that you ordered (as some accessories may be sold separately). Check everything carefully before use. If any part is missing or damaged, do not use this product. Contact support using the customer service email located on the back of the owner's manual. **NOTE:** Some accessories may not be included with the purchase

## KEY FEATURES

- NON-ELECTRIC
- PORTABLE
- LIGHT WEIGHT
- SPACE SAVING
- ECO-FRIENDLY

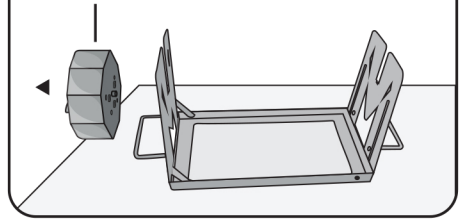
## YOUR ROTO-Q 360



## CLEANING TIPS

Before using your ROTO-Q 360™ for the first time, Remove all stickers and warning labels from your device and wipe the 360 Power Core with a damp cloth. (Power Core should not be placed in dishwasher or submerged in water.) The Frame and all other pieces should be rinsed and cleaned thoroughly with warm soapy water and scrubbed with a sponge or cloth before and after using.

Remove 360 Power Core before cleaning.

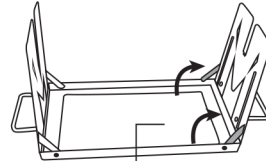
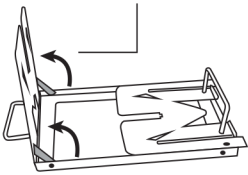


## Setting up your ROTO-Q 360

## GETTING STARTED

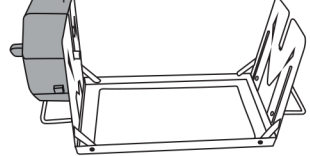
Lock all 4 corner hinges into place and make sure frame is secure.

**1:** POP AND LOCK

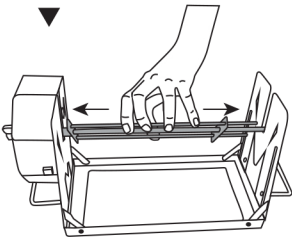


**2:** POP AND LOCK

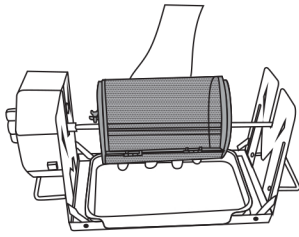
**3:** ATTACH AND SECURE THE POWER CORE 360



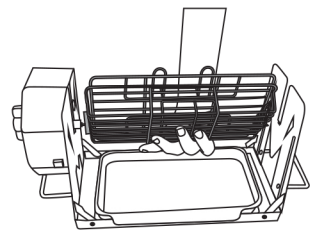
Choose your desired Rotisserie Attachment and secure into place.



• Rotisserie Skewer

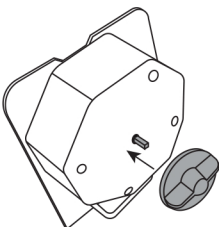


• Rotisserie Basket

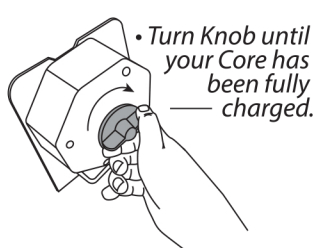


• Rotisserie Cage

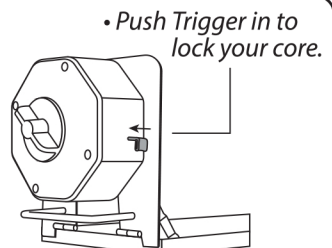
Activate your Power Core 360 Knob to gather and store kenetic energy.



• Attach Turning knob.

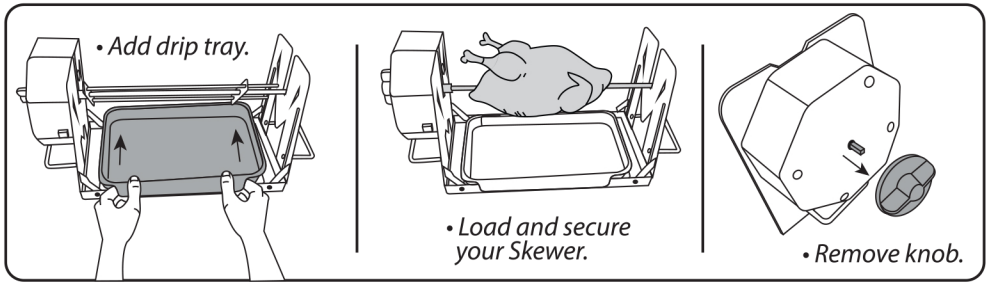


• Turn Knob until your Core has been fully charged.

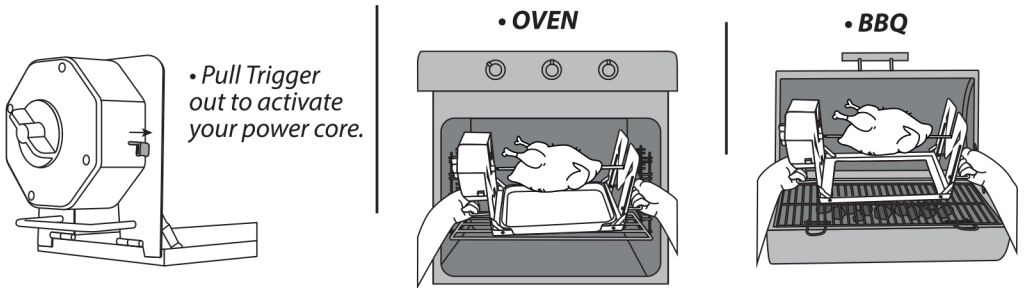


• Push Trigger in to lock your core.

## Insert your drip tray and load your meat of choice.



## Activate your Power Core and choose your cooking method.



## WARNINGS & LIMITED WARRANTY:

*"Always think 360"*

- Forks, Skewer and other metal parts with this unit are sharp and will get extremely hot during use. Great care should be taken to avoid personal injury. Wear protective oven mitts or gloves.
- Never use the Oven Door as a place to rest a hot **ROTO-Q 360** filled with food. The hot unit could damage the Oven Door or cause the unit to tip over causing potential Personal injury. • Never use abrasive cleaning materials or utensils on these surfaces.
- Never place the **ROTO-Q 360** directly on a counter top or table. • Never place the **ROTO-Q 360** directly on top of burning charcoal.
- Never place the **ROTO-Q 360** directly on a kitchen stove while cooking. • Always wear oven mitts or gloves during the cooking process.

The manufacturer warrants that your **Roto-Q 360™** is free of defects in materials and workmanship and will, at its option, repair or replace any defective **Roto-Q 360™** that qualifies under these terms and is returned within the warranty period. All parts and components of the **Roto-Q 360™** are warranted for 360 days from the original date of purchase.

This warranty is valid only in accordance with the conditions set forth below:

1. Normal wear and tear are not covered by this warranty. This warranty applies to consumer use only, and is void when the product is used in a commercial or institutional setting.
2. The warranty extends only to the original consumer purchaser and is not transferable. In addition, proof of purchase must be provided. This warranty is void if the product has been subject to accident, misuse, abuse, improper maintenance or repair, or unauthorized modification.
3. This limited warranty is the only written or expressed warranty given by the manufacturer. Any implied warranty of merchantability or fitness for a particular purpose on this product is limited in duration to the duration of this warranty. Some states do not allow limitations on how long an implied warranty lasts, so the above limitation may not apply to you.
4. Repair or replacement of the product (or, if repair or replacement is not feasible, a refund of the purchase price) is the exclusive remedy under this warranty and will be determined at the sole discretion of Roto-Q 360. The manufacturer shall not be liable for any incidental or consequential damages for breach of this warranty or any implied warranty on this product. Some states do not allow the exclusion or limitation of incidental or consequential damages, so the above limitation or exclusion may not apply to you.
5. This warranty gives you specific legal rights, and you may also have other rights which vary from state to state. If warranty service is necessary, the original purchaser must pack the product securely and send it postage paid with a description of the defect, proof of purchase, and a check or money order for \$15.00 (USD) to cover return postage and handling to the following address:

**Roto-Q 360 - 912 E 12th St Ste B, Los Angeles, CA 90021**

For support questions please contact us at: [support@rotoq360.com](mailto:support@rotoq360.com)

[ROTOQ360.COM](http://ROTOQ360.COM)